

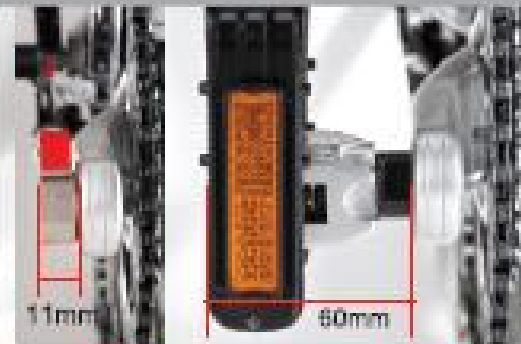


Quick Release Device



2009 TBEA Creative Bicycles, Parts, and Accessories Competition Award.

New Quick Release Device is easy to use and maintain. Simply combine thread housing and new spindle design created a brand new way to define the pedal. By fixing the thread housing on the crank, The pedal can be easily engaged or disengaged by pull the plug on top of the thread housing.



QRD

ORDINARY

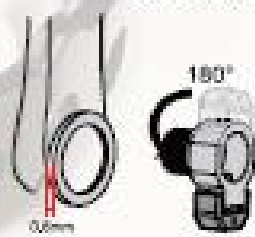


Quick Release Device



90°

Using a washer on the crank could rotate the lock of QRD to 90°



180°

Using a washer on the crank could rotate the lock of QRD to 180°

M-FORCE



XMF08TT

XMF08TT / XMF08TC

Weight: Tt: 210 g/pr / Cr: 255 g/pr

Body: Titanium

Spindle: Titanium / Cromoly

Bearing: 3 Cartridge

Springs: Square SWP

Seal: 1 Rubber

Cleat: XPT / SPD® (6" Float)

Release: Dual Sided Adjustable

Color: Titanium



XMF08TC



**XPT / SPD
(6" Float)**

TWINS



36

ADJUSTABLE FRONT AND REAR CLAWS FOR EITHER TOE-IN OR STEP-IN ENTRY



XMF05AC

XMF05AT / XMF05AC

Weight: T: 276 g/pr / CR: 330 g/pr

Body: Aluminum

Spindle: Titanium / Cromoly

Bearing: 3 Cartridge

Springs: SWP

Seal: 1 Rubber

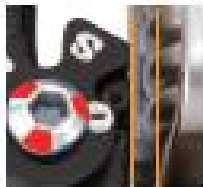
Cleat: TWINS (6° Float)

Release: Dual Sided Adjustable

Color: Painted Black / Gray



XMF05AT



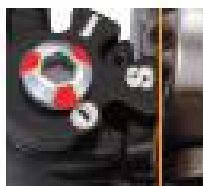
Open

0: Open the front mechanism for vertical clip in



1mm

1: 1mm space for the front claw movement



Set

2: Slot down the front mechanism as toe in entry

Full cartridge bearing system; bearing life increased by more than 20%.



**TWINS CLEATS
(6° Float)**

TWINS




XMF6AT

XMF6AT / XMF6AC

Weight: Ti: 298 g/pr / Cr: 348 g/pr

Body: Aluminum

Spindle: Titanium / Cromoly

Bearings: 3 Cartridge

Springs: SWP

Seal: 1 Rubber

Cleat: XPC / SPD® (6° Float)

Release: Dual Sided Adjustable

Color: Painted Black / Gray




XMF6AC



XPC / SPD
(6° Float)



12 Points adjustable release tension

M-FORCE



XMF4AT / XMF4AC

Weight: Ti: 230 g/pr / Cr: 275 g/pr

Body: Aluminum 6061 Forged

Spindle: Titanium / Cromoly

Bearings: 1 Cartridge

Bushings: 2 DU

Springs: Square SWP

Seal: 1 Rubber

Cleat: XPT / SPD8 (6° Float)

Release: Dual Sided Adjustable

Color: Hard Anodized



XPT / SPD
(6° Float)



M-FORCE



XMF3CC

Weight: 312 g/pr
Body: Cromoly Investment
Spindle: Cromoly
Bearings: 1 Cartridge
Bushings: 2 DU
Springs: Square SWP
Seal: 1 Rubber
Cleat: XPT / SPD® (6° Float)
Release: Dual Sided Adjustable
Color: Titanium



XMF07AC

Weight: 306 g/pr
Body: Aluminum
Spindle: Cromoly
Bearings: 1 Cartridge
Bushings: 2 DU
Springs: Square SWP
Seal: 1 Rubber
Cleat: XPT / SPD® (6° Float)
Release: Dual Sided Adjustable
Color: Indigo

SPEED⁴

Maximum Energy Transfer body design, distance of 8.7mm from top of pedal to center of spindle, reduced energy waste by 56% compare to traditional cleat system.



SPEEDY



XRW01AT

Aluminum 6061 Forged
Body to provide best
strength and safety.

XRW01AT / XRW01AC

Weight: Tl: 205 g/pr / Cr: 250 g/pr

Body: Aluminum 6061 Forged

Spindle: Titanium / Cromoly

Bearings: 3 Cartridge

Springs: Square SWP

Seal: 1 Rubber

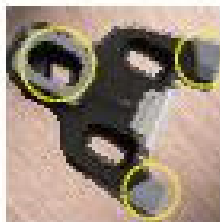
Cleat: SPEEDY Fixed / 9° Float

Release: Single Sided Adjustable

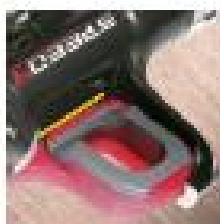
Color: Hard Anodized



Maximum
Energy Transfer
body design.



Anti-Loose design.



Anti-Slip cleat design.



XRW01AC

THRUST C



XRF5CT

XRF5CT / XRF5CC

- Weight: Tc: 198 g/pr / Cr: 240 g/pr
- Body: Magnesium with carbon wrap
- Spindle: Titanium / Cromoly
- Bearings: 3 Cartridge
- Springs: Square SWP
- Seat: 1 Rubber
- Cleat: THRUST Fixed / 6° Float
- Release: Single Sided Adjustable
- Color: Carbon Black



XRF5CC



THRUST

Maximum Energy Transfer body design, distance of 12,2mm from center of spindle top, reduced energy lost by 20% compare to traditional cleat system.



XRF5MT / XRF5MC

Weight: Ti: 190 g/pr / Cr: 232 g/pr

Body: Magnesium

Spindle: Titanium / Cromoly

Bearings: 3 Cartridge

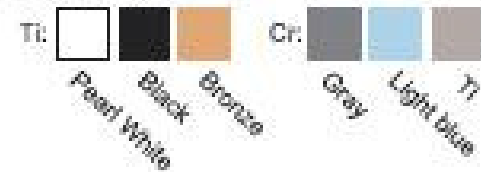
Springs: Square SWP

Seal: 1 Rubber

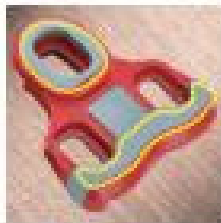
Cleat: THRUST Fixed / 6° Float

Release: Single Sided Adjustable

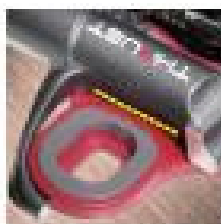
Color: Painted



Maximum Energy Transfer design.



Anti-Loose design.



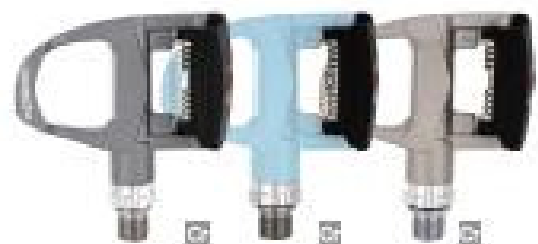
Anti-Slip cleat design.



XRF5MT



XRF5MC



THRUST A



XRF5AC

Weight: 258 g/pr

Body: Aluminum

Spindle: Cromoly

Bearings: 3 Cartridge

Springs: Square SWP

Seat: 1 Rubber

Cleat: THRUST Fixed / 6° Float

Release: Single Sided Adjustable

Color: Polished silver



R-FORCE



XRF06TT

XRF06TC

XRF06TT / XRF06TC

Weight: Ti: 170g/pr / Cr: 215g/pr

Body: Titanium

Spindle: Titanium / Cromoly

Bearings: 3 Cartridge

Seal: 1 Rubber

Cleat: XPR / SPD® (6° Float)

Release: Single Sided Adjustable

Color: Titanium



XRF04CT

XRF04CT / XRF04CC

Weight: Ti: 200g/pr / Cr: 246g/pr

Body: Full Carbon

Spindle: Titanium / Cromoly

Bearings: 3 Cartridge

Springs: Square SWP

Seal: 1 Rubber

Cleat: RC5,6 / LOOK® (0° / 9° Float)

Release: Single Sided Adjustable

Color: Carbon Black



XRF04CC

R-FORCE



XRFL1MT

Weight: 244 g/pr
Body: Magnesium
Spindle: Titanium
Bearings: 1 Cartridge
Bushings: 2 DU
Springs: Square SWP
Seal: 1 Rubber
Cleat: XRC5,8 / LOOK® (0° / 9° Float)
Release: Single Sided Adjustable
Color: Painted White



XRFL3AC

Weight: 334 g/pr
Body: Aluminum
Spindle: Cromoly
Bearings: 1 Cartridge
Bushings: 2 DU
Springs: Square SWP
Seal: 1 Rubber
Cleat: XRC5,8 / LOOK® (0° / 9° Float)
Release: Single Sided Adjustable
Color: Painted Silver

FACE OFF

Modular body design with ultra low profile / lightweight.
Cages and plates are available in different design and shape for personalization.



XMX09AC

Weight: 430 g/pr

Body: Aluminum 6061 CNC machined

Spindle: Cromoly

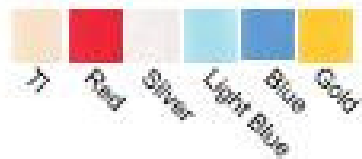
Bearings: 1 Cartridge

Bushings: 1 DU

Pin: Replaceable straight pins

Seal: 3 Rubber

Color: Anodized



FACE OFF



2008 TBEA Creative Bicycles, Parts,
and Accessories Competition Award.



XMX11AC

Weight: 396 g/pr

Body: Aluminum 6081 CNC machined

Spindle: Cromoly

Bearings: 1 Cartridge

Bushings: 1 DU

Pin: Replaceable straight pins

Seal: 3 Rubber

Color: Anodized



Black Silver Red Gold Pink Green



FACE OFF



XMX13AC

Weight: 350 g/pr

Body: Aluminum 6061 CNC machined

Spindle: Cromoly

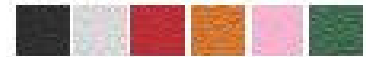
Bearings: 1 Cartridge

Bushings: 1 DU

Pin: Replaceable straight pins

Seal: 3 Rubber

Color: Anodized



Black Silver Red Gold Pink Green



FACE OFF



XMX15MC

Weight: 380 g/pr

Body: Magnesium

Spindle: Cromoly

Bearings: 1 Cartridge

Bushings: 1 DU

Pin: Replaceable pins

Seal: 1 Rubber

Color:



Black Silver Indigo



FACE OFF



XMX17AC

Weight: 380 g/pr

Body: Aluminum 6061 CNC machined

Spindle: Cromoly

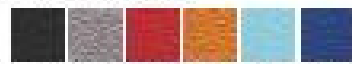
Bearings: 1 Cartridge

Bushings: 1 DU

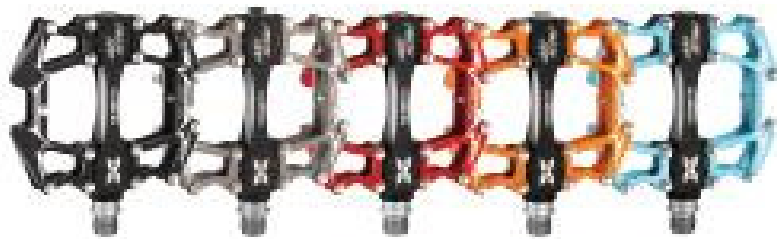
Pin: Replaceable straight pins

Seal: 1 Rubber

Color: Anodized



Black Gray Red Gold Light Blue Navy Blue





XMX14AC

Weight: 340 g/pr

Body: Aluminum 6061 Forged

Spindle: Cromoly

Bearings: 1 Cartridge

Bushings: 1 DU

Pin: Replaceable straight pins

Seal: 1 Rubber

Color: Anodized



Black Gray Red Gold Light Blue Painted White





XMX16AC

Weight: 350 g/pr

Body: Aluminum 6061 Forged

Spindle: Cromoly

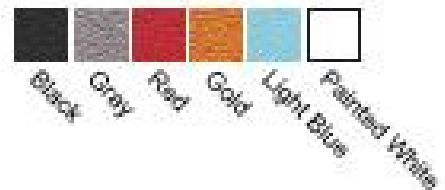
Bearings: 1 Cartridge

Bushings: 1 DU

Pin: Replaceable straight pins

Seal: 1 Rubber

Color: Anodized





XMX02AC

Weight: 390 g/pr

Body: Aluminum 6061 CNC machined

Spindle: Cromoly

Bearings: 1 Cartridge

Bushings: 1 DU

Pin: Replaceable straight pins

Seal: 1 Rubber

Color: Anodized



Black Grey Red Gold Light Blue Navy Blue



HURTLE



XMX10AC *ptera*

Weight: 390 g/pr

Body: Aluminum 6061 CNC machined

Spindle: Cromoly

Bearings: 1 Cartridge

Bushings: 1 DU

Pin: Replaceable straight pins

Seal: 1 Rubber

Color: Anodized



XMX12AC *CURVE*

Weight: 370 g/pr

Body: Aluminum 6061 CNC machined

Spindle: Cromoly

Bearings: 1 Cartridge

Bushings: 1 DU

Pin: Replaceable straight pins

Seal: 1 Rubber

Color: Anodized



MX-FORCE



XM3MC

Weight: 400 g/pr

Body: Magnesium

Spindle: Cromoly

Bearings: 1 Cartridge

Bushings: 2 DU

Pin: Replaceable straight pins

Seal: 1 Rubber

Color: Painted Black / Silver

MX-FORCE



XMX5AC

Weight: 480 g/pr

Body: Aluminum Investment

Spindle: Cromoly

Bearings: 1 Cartridge, 1 Needle

Bushings: 1 DU

Pin: Replaceable straight pins

Seal: 1 Rubber

Color: Painted Black



XMX6AC

Weight: 640 g/pr

Body: Aluminum

Spindle: Cromoly

Bearings: 1 Cartridge, 1 Needle

Pin: Replaceable straight pins

Seal: 1 Rubber

Color: Electro Black



G-FORCE



XGF1MC

Weight: 476 g/pr
Body: Magnesium
Spindle: Chromoly
Bearings: 1 Cartridge
Bushings: 2 DU
Springs: Square SWP
Seal: 1 Rubber
Cleat: XPC / SPDØ (8° Float)
Release: Dual Sided Adjustable
Color: Painted Red



XGF2AC

Weight: 554 g/pr
Body: Aluminum
Spindle: Chromoly
Bearings: 1 Cartridge
Bushings: 2 DU
Springs: Square SWP
Seal: 1 Rubber
Cleat: XPC / SPDØ (8° Float)
Release: Dual Sided Adjustable
Color: Painted Dark Gray

T-FORCE



XTF1MC

Weight: 432 g/pr

Body: Magnesium

Spindle: Cromoly

Bearings: 1 Cartridge

Bushings: 2 DU

Springs: Square SWP

Seal: 1 Rubber

Cleat: XPC / SPD® (6° Float)

Release: Single Sided Adjustable

Color: Painted Gray

XTF2AC

Weight: 508 g/pr

Body: Aluminum

Spindle: Cromoly

Bearings: 1 Cartridge

Bushings: 2 DU

Springs: Square SWP

Seal: 1 Rubber

Cleat: XPC / SPD® (6° Float)

Release: Single Sided Adjustable

Color: Painted Silver

